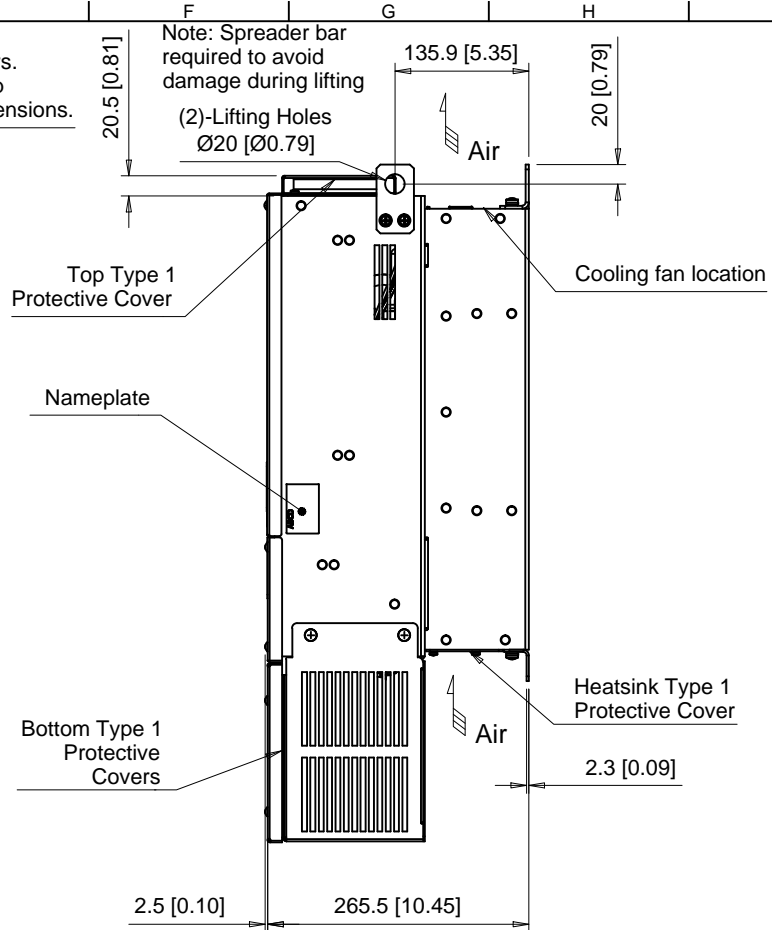
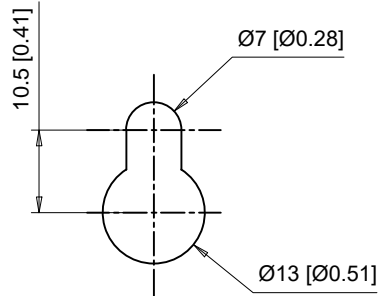


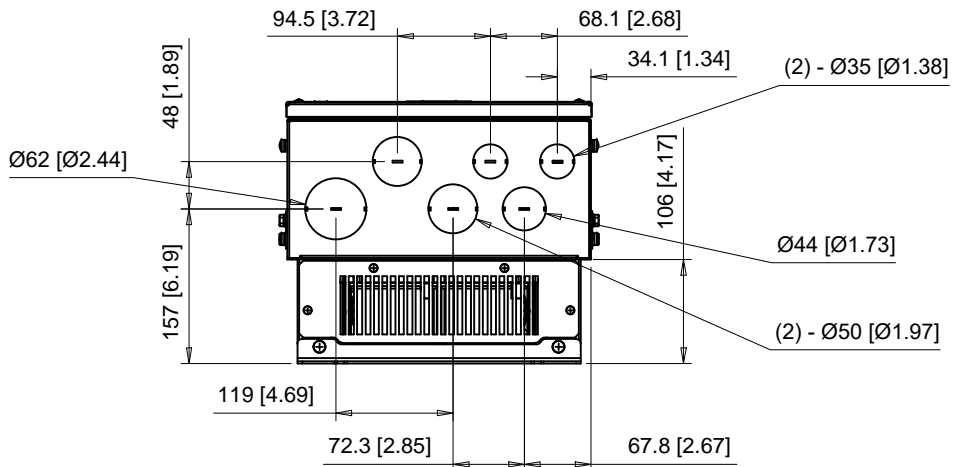
(4) Mounting Holes for M6 [1/4"] Screws. See Detail A for top mounting hole dimensions.



Note: Spreader bar required to avoid damage during lifting
(2)-Lifting Holes Ø20 [Ø0.79]



Detail A
Top mounting hole dimensions
Scale 1:1

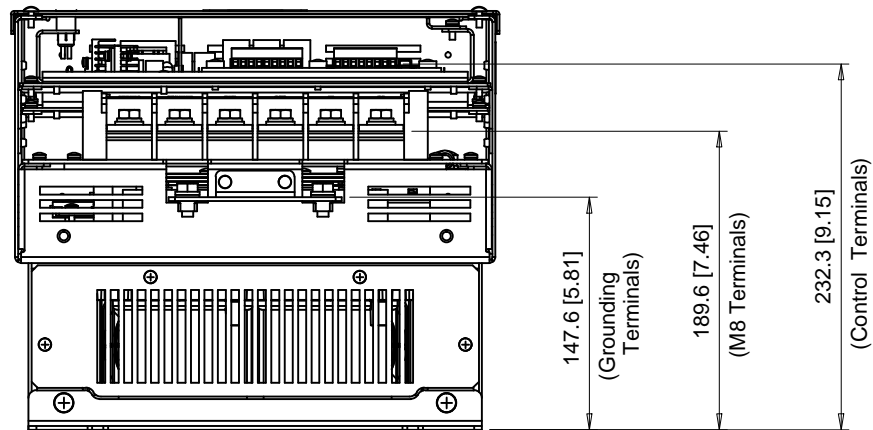
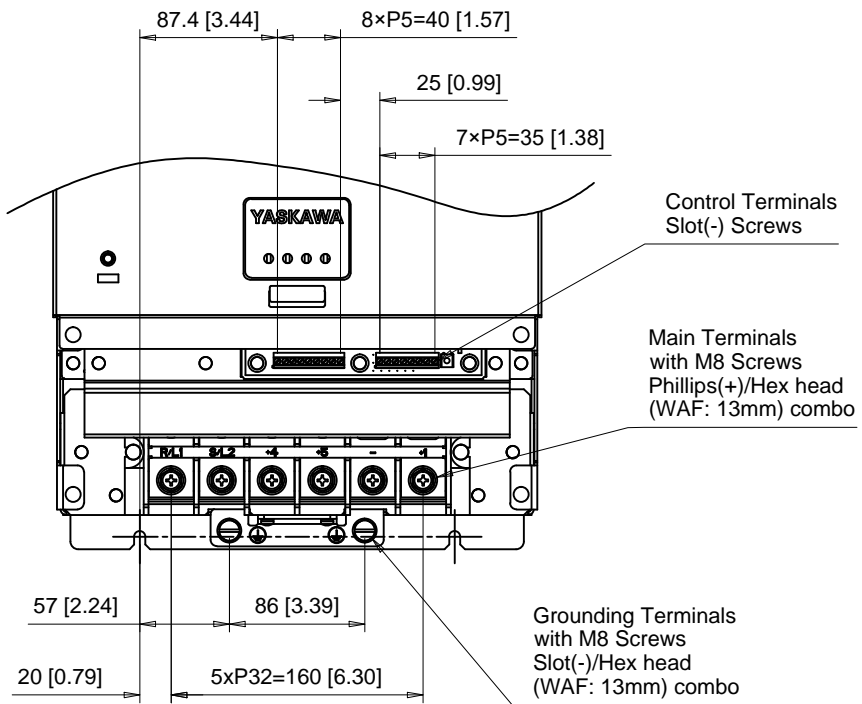


The dimensions shown are for an IP00 Type Converter that has been converted to a NEMA Type 1 Converter by adding the parts from NEMA 1 Kit part number UUX001687

C/C: SPBC-	INPUT VOLTAGE 1-PHASE (VAC)	OUTPUT CAPACITY (kW)	WEIGHT Kg (lb)	COOLING FANS	HEAT LOSS (W)		
					INT	EXT	TOT
2030□□□	230 TO 240	30	29.4 (64.7)	2	209	728	937
4037□□□	460 TO 480	37	29.4 (64.7)	2	185	724	909
4045□□□		45	30.4 (66.9)	2	199	782	981

□ denotes A-Z

INT=Internal Components
EXT=External Heatsink
TOT=Total

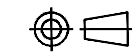


C/C: SPBC-	TERMINAL SYMBOL	WIRE RANGE AWG (mm ²)	TERMINAL SCREW	CLAMPING TORQUE N.m. (lb.in.)
2030□□□	R/L1, S/L2, +4, +5, -, +1	6 - 250 (13.3 - 127)	M8	9.0 - 11.0 (79.7 - 97.4)
4037□□□	⊕	4 - 2 (25 - 35)	M8	9.0 - 11.0 (79.7 - 97.4)
4045□□□				

□ Denotes A-Z

Note: Refer to applicable codes and standards for proper wire type and size.

YASKAWA



UNITS MM [IN]

SCALE 1:5

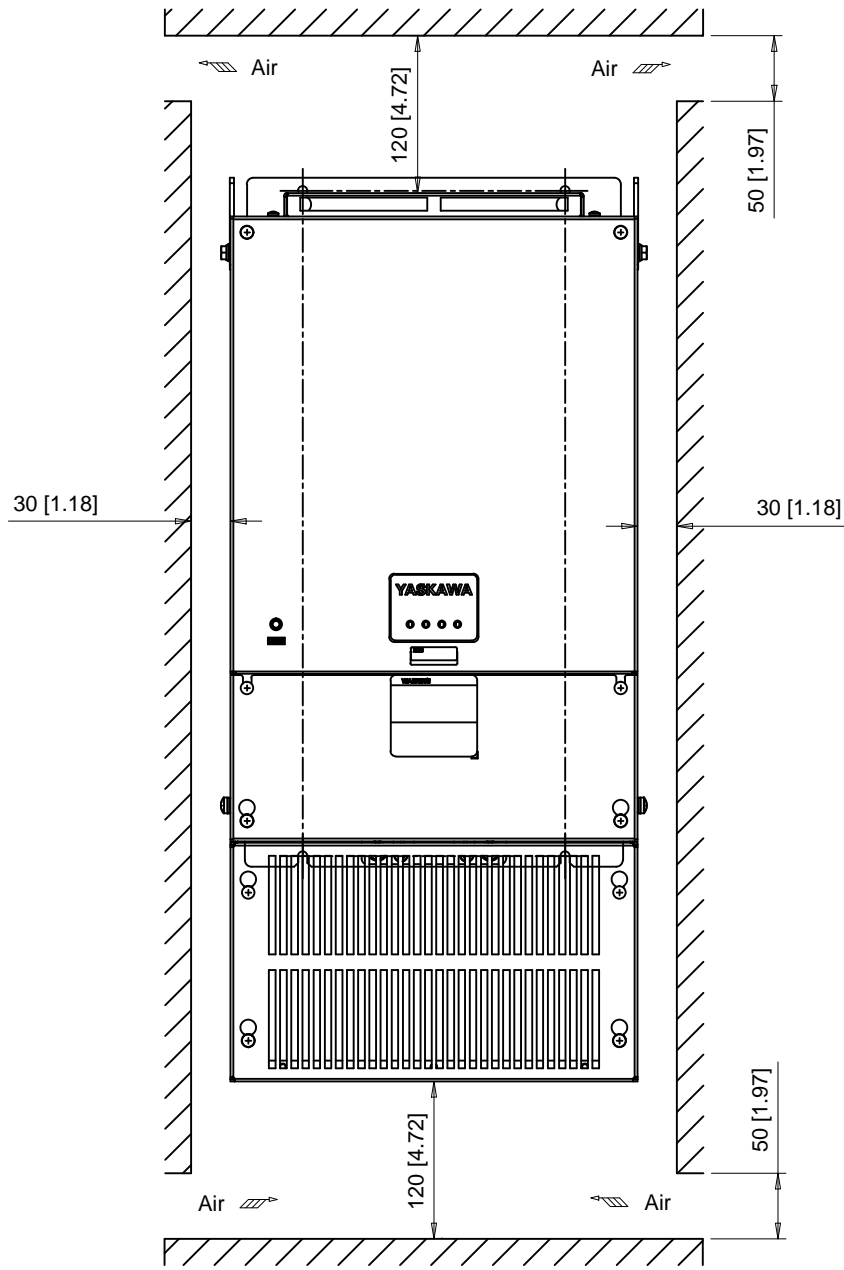
DRWN.	J. MATTAS	8-8-18
CHKD.	J. PIOTROWSKI	8-23-18
TECH.	L. UDDIN	8-30-18
APRV.	J. CAIRO	9-10-18

TITLE	SPBC DIMENSION DRAWING FRAME SIZE 2 NEMA TYPE 1 ENCLOSURE
-------	---

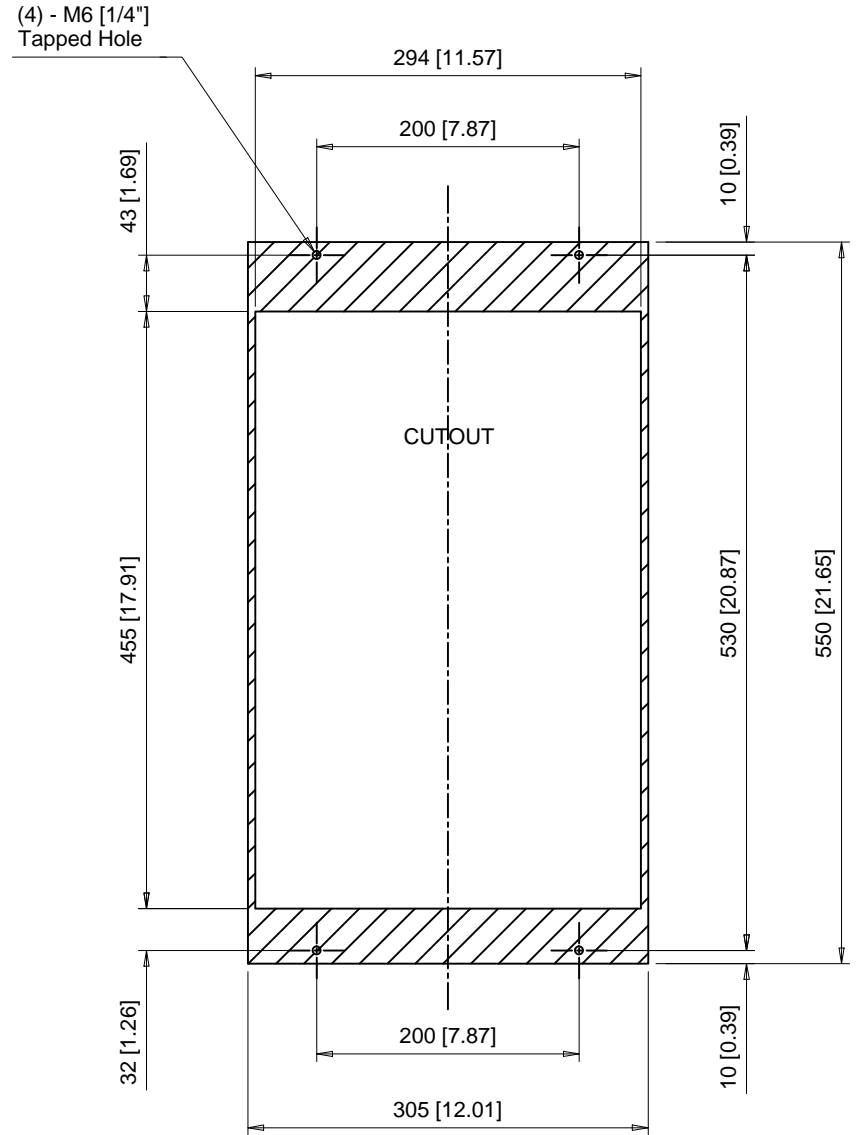
SIZE	A	PAGE	2 OF 3
DWG.NO.	DD.SPBC.FR2.N1		

REV
0

Minimum Installation Clearances



Panel Cutout
For External Heatsink Mounting Configuration



Notes:
Exposed heatsink minimum clearance D = 111 [4.37].

YASKAWA

UNITS MM [IN]
SCALE 1:6

DRWN.	J. MATTAS	8-8-18
CHKD.	J. PIOTROWSKI	8-23-18
TECH.	L. UDDIN	8-30-18
APRV.	J. CAIRO	9-10-18

TITLE
SPBC DIMENSION DRAWING
FRAME SIZE 2
NEMA TYPE 1 ENCLOSURE

SIZE A
PAGE 3 OF 3
DWG.NO.
DD.SPBC.FR2.N1

REV
0